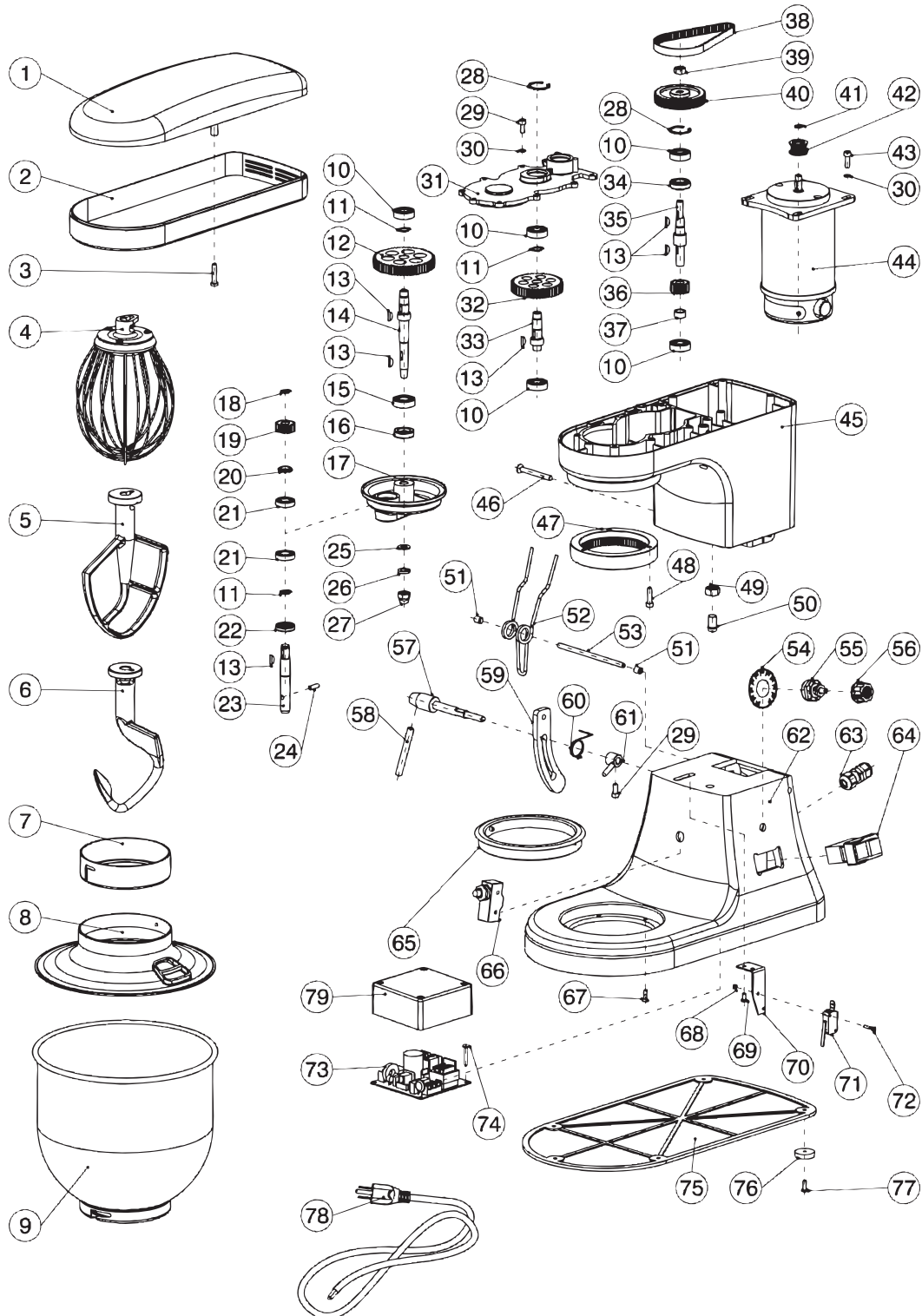


Parts Breakdown

Model MX-CN-0007-HG 44475



Parts Breakdown

Model MX-CN-0007-HG 44475

Item No.	Description	Position	Item No.	Description	Position	Item No.	Description	Position
AJ386	Gray Cover for 44475	1	67153	Circlip for Hole for 44475	28	67180	Switch Base for 44475	55
67127	Band for 44475	2	67154	Screw for 44475	29	67181	Speed Control for 44475	56
67128	Screw for 44475	3	67155	Spring Washer for 44475	30	67182	Handle Spindle for 44475	57
67129	Wire Whip for 44475	4	67156	Support Cover for 44475	31	67183	Handle for 44475	58
67130	Flat Beater for 44475	5	67157	Gear for 44475	32	67184	Arc Slide Block for 44475	59
67131	Hook for 44475	6	67158	Gear Shaft for 44475	33	67185	Torsion Spring for 44475	60
67132	Metal Ring for 44475	7	67159	Oil Seal for 44475	34	67186	Support Sleeve for 44475	61
67133	Safety Guard for 44475	8	67160	Axle for 44475	35	AJ389	Gray Base for 44475	62
67134	Bowl for 44475	9	67161	Gear for Axle for 44475	36	67188	Waterproof Joint for 44475	63
67135	Deep Groove Ball Bearing for 44475	10	67162	Bushing for 44475	37	67189	Power Switch for 44475	64
67136	Circlip for Shaft for 44475	11	67163	Synchronous Belt for 44475	38	67190	Bowl Seat for 44475	65
67137	Gear for 44475	12	67164	Nut for 44475	39	67191	Travel Switch for 44475	66
67138	Woodruff Key for 44475	13	67165	Large Synchronous Pulley for 44475	40	67192	Screw for 44475	67
67139	Main Shaft for 44475	14	67166	Circlip for Shaft for 44475	41	67193	Nut for 44475	68
67140	Deep Groove Ball Bearing for 44475	15	67167	Small Synchronous Pulley for 44475	42	67194	Screw for 44475	69
67141	Oil Seal for 44475	16	67168	Screw for 44475	43	67195	Distance Switch Support for 44475	70
AJ387	Gray Operation Frame for 44475	17	67169	Motor (110V 60Hz) for 44475	44	67196	Distance Switch for 44475	71
67143	Circlip for Shaft for 44475	18	AJ388	Gray Rotating Base for 44475	45	67197	Screw for 44475	72
67144	Planet Gear for 44475	19	67171	Screw for 44475	46	67198	PCB for 44475	73
67145	Planet Gear Pad for 44475	20	67172	Inner Gear for 44475	47	67199	Screw for 44475	74
67146	Deep Groove Ball Bearing for 44475	21	67173	Screw for 44475	48	67200	Base Plate for 44475	75
67147	Oil Seal for 44475	22	67174	Nut for 44475	49	67201	Rubber Pads for 44475	76
67148	Planet Shaft for 44475	23	67175	Locating Pin for 44475	50	67202	Screw for 44475	77
67149	Pin for 44475	24	67176	Screw for 44475	51	67203	Plug for 44475	78
67150	Flat Washer for 44475	25	67177	Double Torsion Spring for 44475	52	67204	PCB Guard for 44475	79
67151	Spring Washer for 44475	26	67178	Rotating Shaft for 44475	53			
67152	Nut for 44475	27	67179	Speed Mark for 44475	54			